

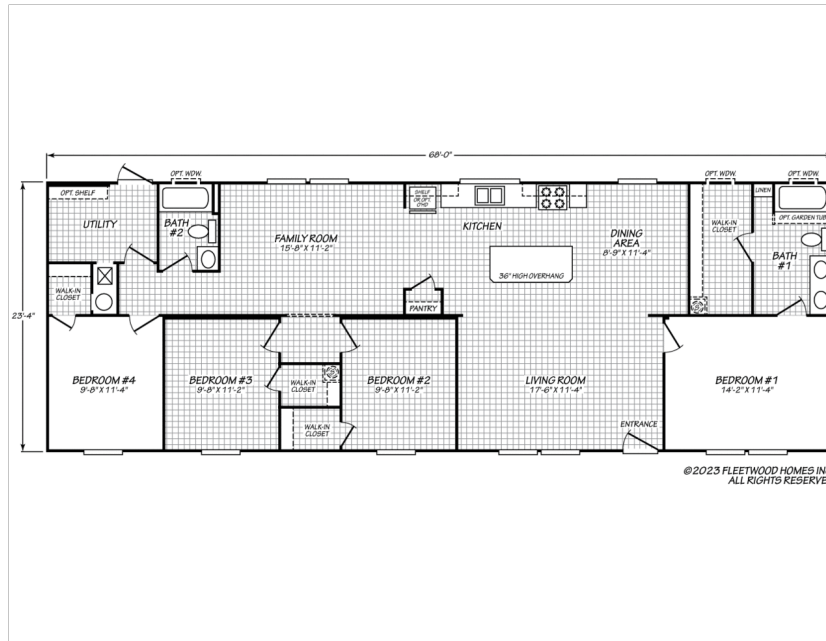


**Floor Plan: The Summit 24684A**  
 4 Bedrooms, 2 Bathrooms, 1586 Square Feet  
 Series: The Summit | Type: Manufactured | Sections: Double-wide



**SCAN FOR  
 MORE DETAILS**

## FLOOR PLAN



Because we have a continuous product updating and improvement process, prices, plans, dimensions, features, materials, specifications and availability are subject to change without notice or obligation. Please refer to working drawings for actual dimensions. Renderings and floor plans are artist's depictions only and may vary from the completed home. Square footage calculations and room dimensions are approximate subject to industry standards. Some features shown are optional.

\*Pricing information is provided for informational purposes only, actual prices may vary and may only be obtained from your retail dealer. Pricing does not include taxes, site preparation costs beyond the services listed or delivery outside of the stated delivery area. Nothing contained herein or on the Web Site constitutes an offer to sell any product or service, and no binding obligations will arise until you and your retail model center have executed final sales documents. We reserve the right to change prices at any time and without notice or obligation. Not responsible for typos. Please contact the retailer to confirm the most current price.

**Lumbee Homes Darlington**  
 107 Bethea Road, Darlington, SC 29532  
 843-393-8959



**cavcohomes.com**

Copyright © 2023 Cavco Industries, Inc. All rights reserved.

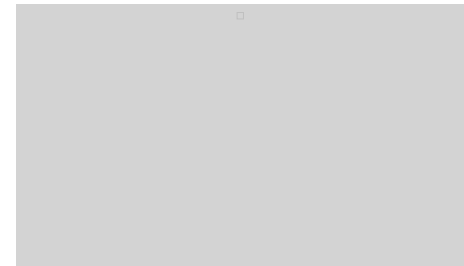
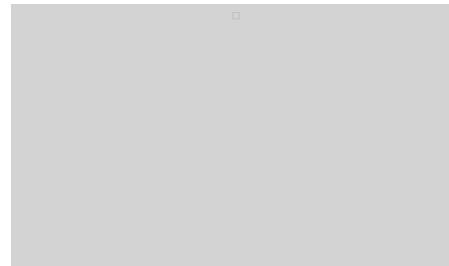
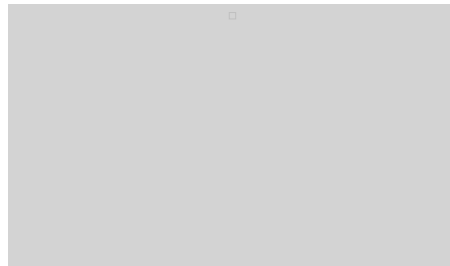
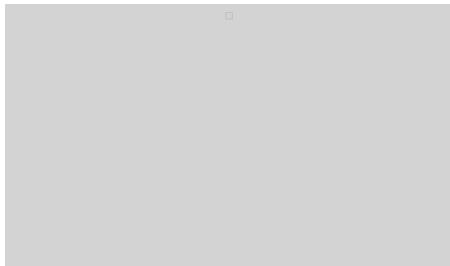
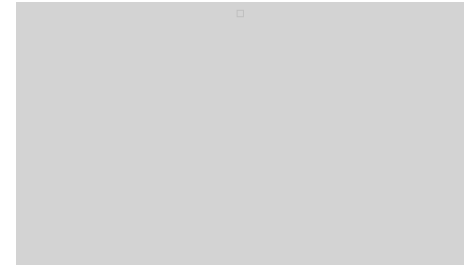
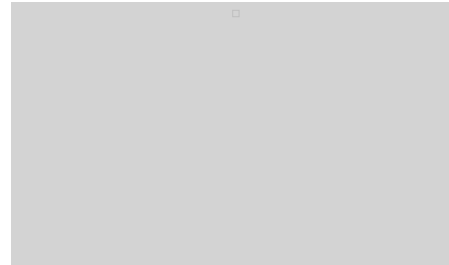
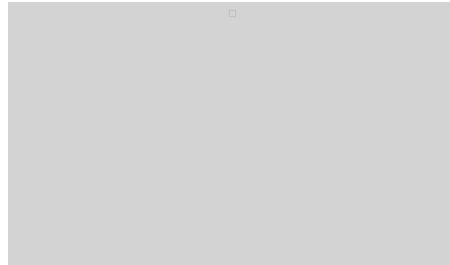
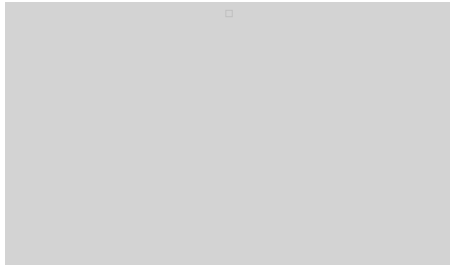
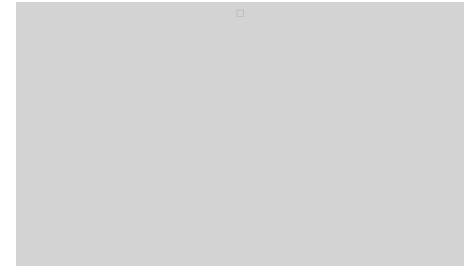


**Floor Plan: The Summit 24684A**  
4 Bedrooms, 2 Bathrooms, 1586 Square Feet  
Series: The Summit | Type: Manufactured | Sections: Double-wide

**SCAN FOR  
MORE DETAILS**



## PHOTOS AND RENDERINGS



**Lumbee Homes Darlington**  
107 Bethea Road, Darlington, SC 29532  
843-393-8959



**cavcohomes.com**

Copyright © 2023 Cavco Industries, Inc. All rights reserved.