

REVISION	DATE	DESCRIPTION
1	4/11/22	UPDATED FOR NEW ELECTRICAL LAYOUT
2	5/22/23	ZERO ENERGY READY

SHEET: DECK

FLOOR DECKING LAYOUT - B HALF

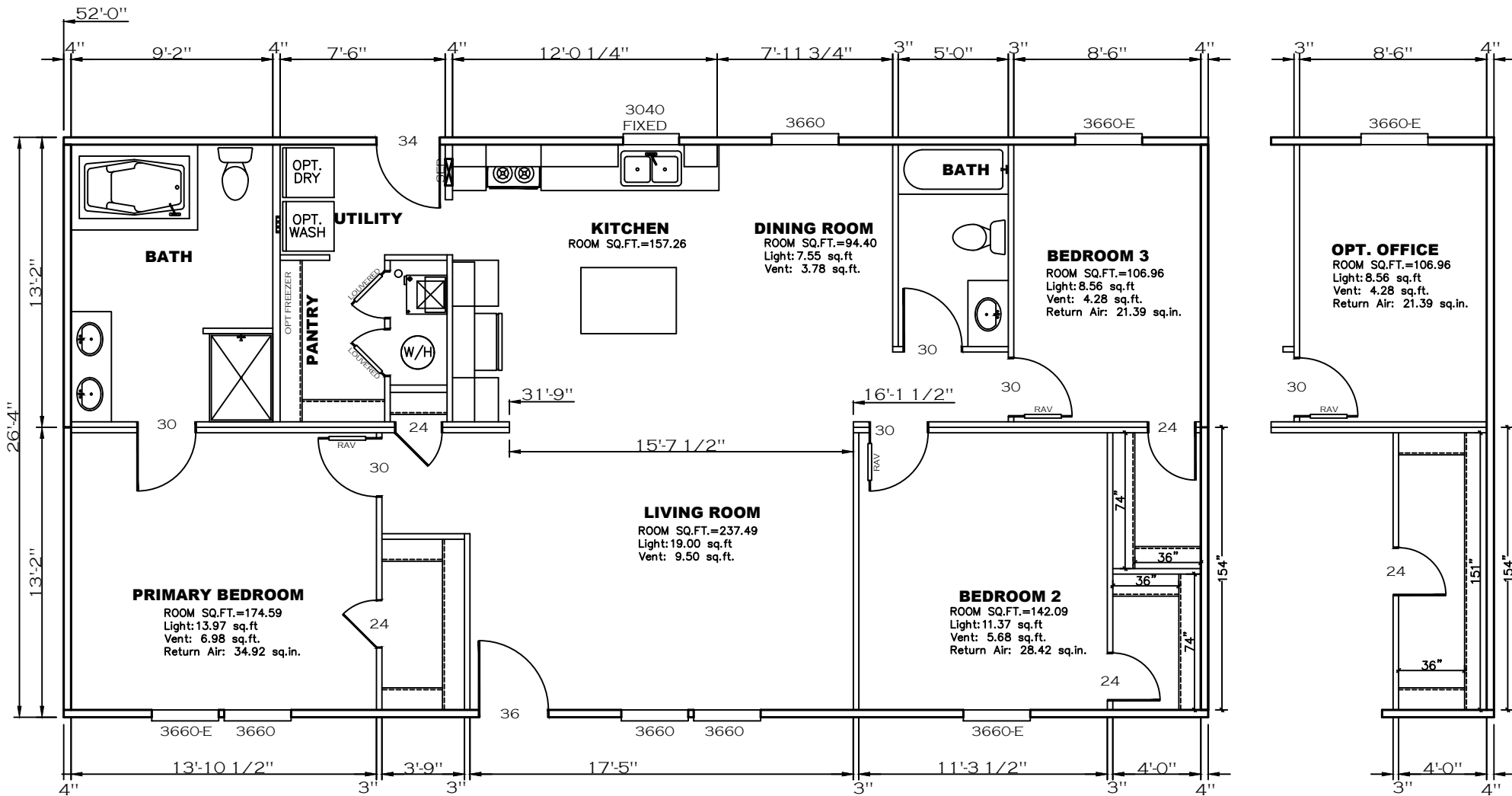


HILBORN, WERNER, CARTER, AND ASSOCIATES, INC.
1627 SOUTH MYRTLE AVE.
CLEARWATER, FL. 33756

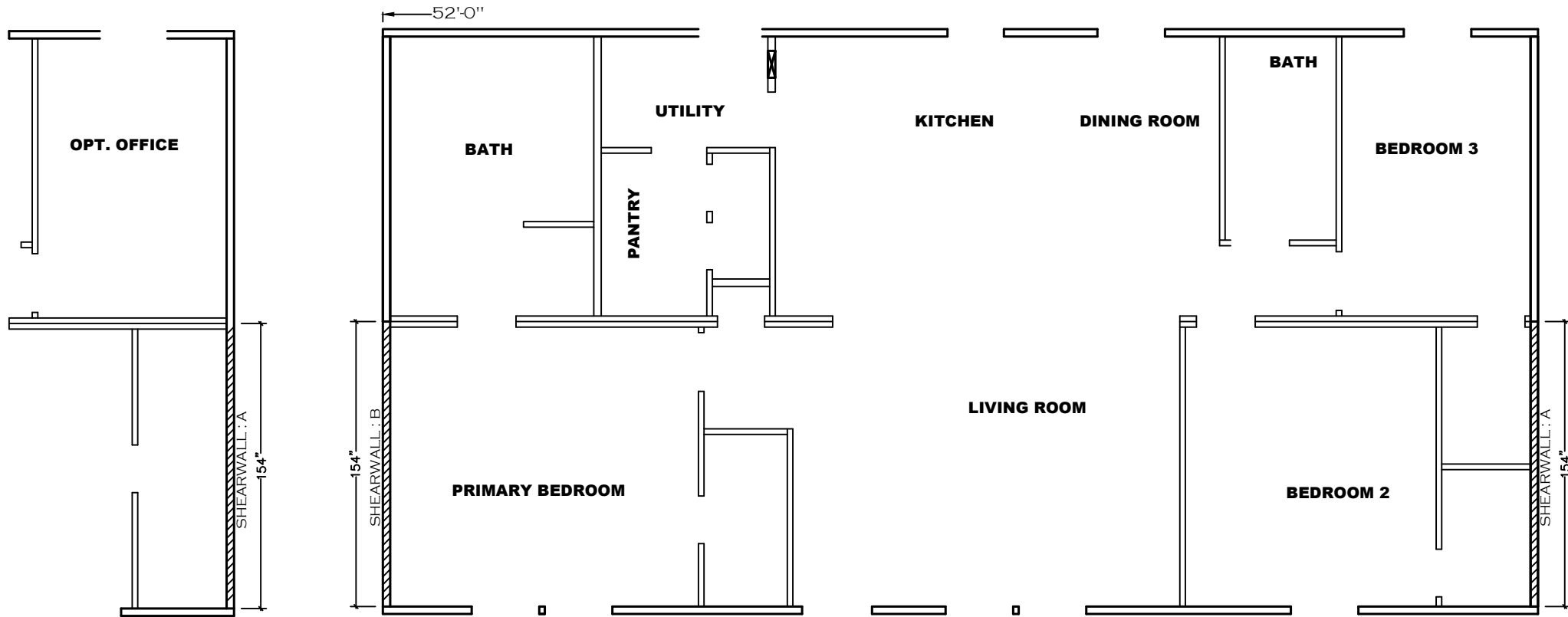
DRAWING #: 34M159
MODEL #: MAV28523A
DATE: 10/09/17 SCALE: N.T.S.

MODEL: EAGLE 52 (28'X52')
SERIES: EAGLE SERIES
PRODUCT DESIGNER: DANIEL SHELDON

STD PLAN "CONDITIONED": 1,369 FT²
REV. BY: BKR
REV. DATE: 03/22/2023



SHEET:	FP	FLOOR PLAN	Clayton - 934 1420 Mountain Rd, Andersonville, TN 37705 PH: 865.494.7800 FAX: 865.494.0243	HILBORN, WERNER, CARTER, AND ASSOCIATES, INC. 1627 SOUTH MYRTLE AVE. CLEARWATER, FL 33756	DRAWING #: 34M211-FP MODEL #: EAG28523A DATE: 5/03/2023	SCALE: N.T.S.	MODEL: EAGLE 52 (28'X52') SERIES: EAGLE SERIES PRODUCT DESIGNER: BRIAN K. RIFFEY	STD PLAN *CONDITIONED*: 1,369 FT ² REV. BY: REV. DATE:
--------	----	------------	--	--	---	---------------	--	---



Model # 34M211 Minimum Joist Spacing 16"
 Box Width = 158" Double wide No Offset Box
 Box Length = 52 ft. 99.5" 10" MIN. IBEAM No Closetony
 No Skylights No Ongami Dornier
 No Porches No Sunken Floor
 Joist Size = #2 spf 2x6 Lags 9Mx3" No Parapet Roof

Version R13.20

Wind Zone 1 Standard Roof						96 inch sidewall
(3/8" sheathing only with 15 gax 1.5" at 5/10" oc (197 plf) Chords: 2x4 SPF Stud Top Plate & 1x3 SPF Rail. Each spliced w/2x4 MCP)						
Shearwall	Dist / Hitch	Length	PLF	# of Joists	Lags	Notes
A	0"	116"	162	2	2/1	
B	52"	116"	162	2	2/1	
Wind Zone 2 Standard Roof						96 inch sidewall
(3/8" sheathing only with 15 gax 1.5" at 5/10" oc (197 plf) Chords: 2x4 SPF Stud Top Plate & 1x3 SPF Rail. Each spliced w/2x4 MCP)						
Shearwall	Dist / Hitch	Length	PLF	# of Joists	Lags	Notes
A	0"	Full	425	2	4/4	
B	52"	Full	425	2	4/4	
Wind Zone 1 5:12 Roof						96 inch sidewall
(3/8" sheathing only with 15 gax 1.5" at 5/10" oc (197 plf) Chords: 2x4 SPF Stud Top Plate & 1x3 SPF Rail. Each spliced w/2x4 MCP)						
Shearwall	Dist / Hitch	Length	PLF	# of Joists	Lags	Notes
A	0"	Full	425	2	4/4	
B	52"	Full	425	2	4/4	
Wind Zone 3 Standard Roof						96 inch sidewall
(3/8" sheathing only with 15 gax 1.5" at 5/10" oc (197 plf) Chords: 2x4 SPF #3 Top Plate & 2x4 Rail. Each spliced w/ 12" glue block)						
Shearwall	Dist / Hitch	Length	PLF	# of Joists	Lags	Notes
A	0"	Full	425	2	4/4	
B	52"	Full	425	2	4/4	

SHEET:
SW

SHEARWALL

Clayton Clayton - 934
 1420 Mountain Rd, Andersonville, TN 37705
 PH: 865.494.7800 FAX: 865.494.0243

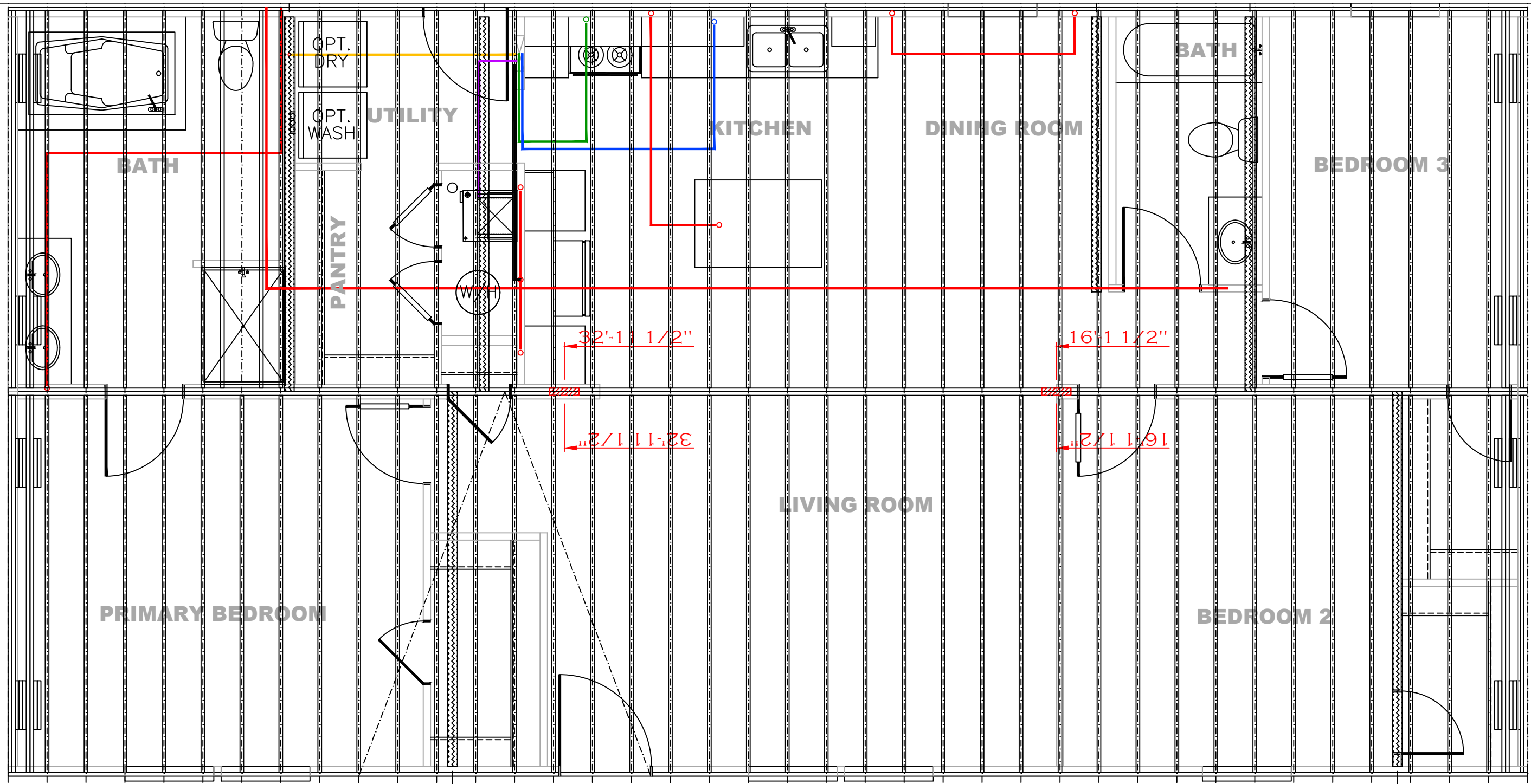
HILBORN, WERNER, CARTER,
 AND ASSOCIATES, INC.
 1627 SOUTH MYRTLE AVE.
 CLEARWATER, FL. 33756

DRAWING #: 34M211-SW
 MODEL #: EAG28523A
 DATE: 5/10/2023

MODEL: EAGLE 52 (28'X52')
 SERIES: EAGLE SERIES
 PRODUCT DESIGNER: DANIEL C. SHELDON

STD PLAN "CONDITIONED": 1,369 FT²
 REV. BY:
 REV. DATE:

SCALE: N.T.S.



- = GFI (12-2)
- = RANGE
- = FURNACE
- = DRYER
- = WATER HEATER
- = DISHWASHER (D/W)
- = REFRIGERATOR
- MC = METER CENTER DROP

REV #	DATE	DESCRIPTION

SHEET:
FJIG ELEC

FLOOR JOIST
ELECTRICAL LAYOUT

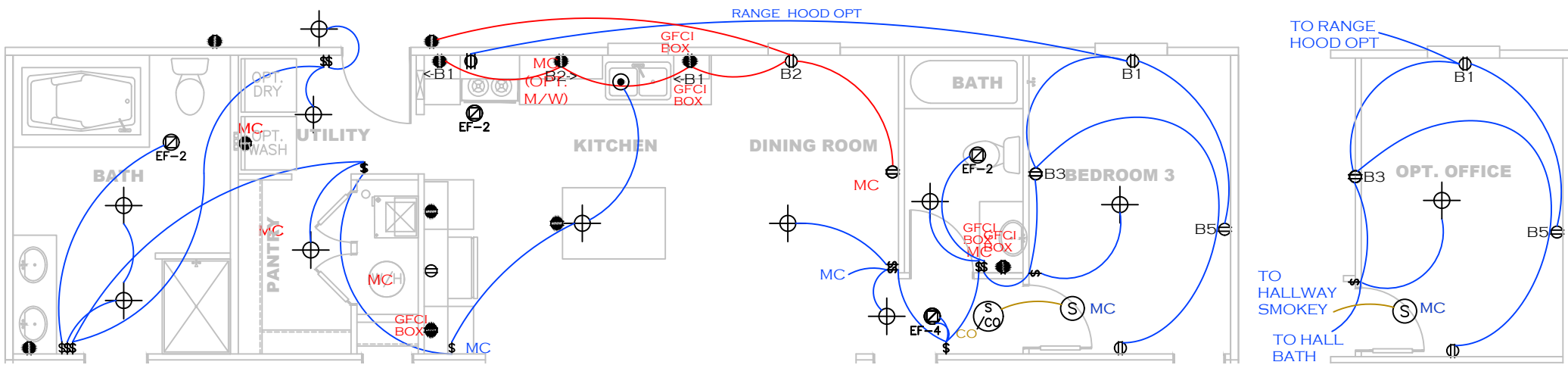
Clayton Clayton - 934
1420 Mountain Rd, Andersonville, TN 37705
PH: 865.494.7800 FAX: 865.494.0243

HILBORN, WERNER, CARTER,
AND ASSOCIATES, INC.
1627 SOUTH MYRTLE AVE.
CLEARWATER, FL. 33756

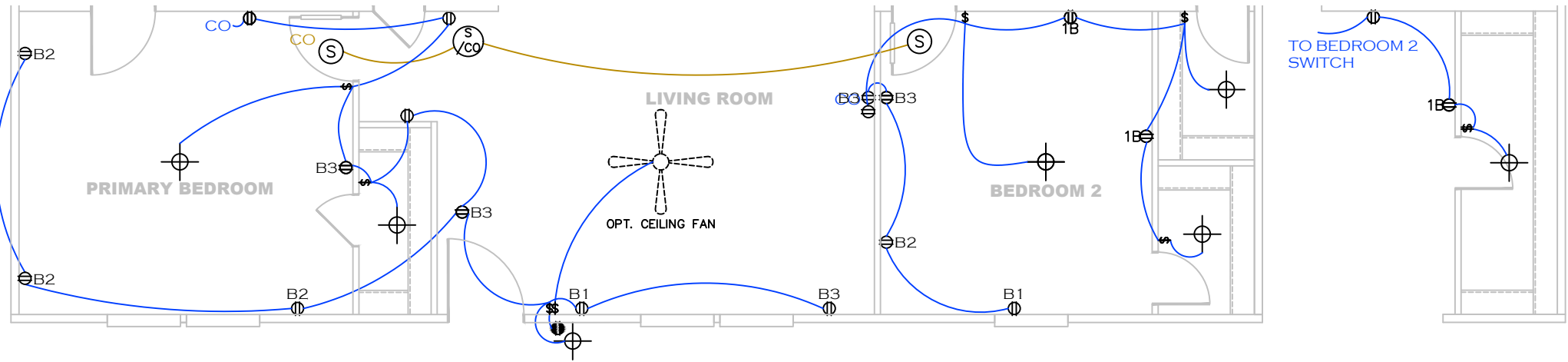
DRAWING #: 34M211
MODEL #: MAV28523A
DATE: 7/10/23 SCALE: N.T.S.

MODEL: EAGLE 52 (28'X52')
SERIES: EAGLE SERIES
PRODUCT DESIGNER: DANIEL SHELDON

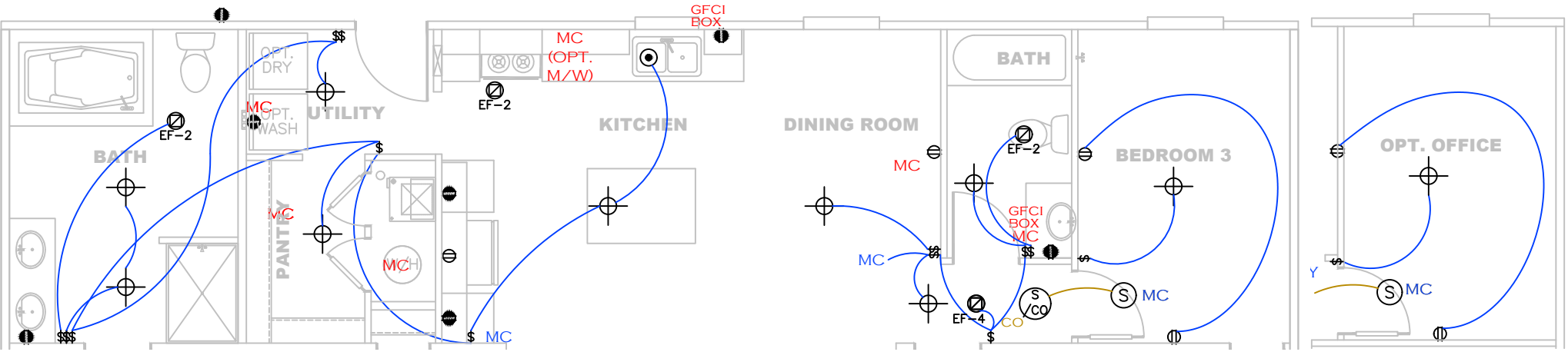
STD PLAN *CONDITIONED*: 1,369 FT²
REV. BY:
REV. DATE:



- = 14-2 WIRE (BLUE)
 - = 14-2 WIRE (GREEN/LIGHTS)
 - = 14-2 WIRE (ORANGE/LED)
 - = 12-2 WIRE (RED)
 - = 14-3 WIRE (BROWN)
 - = THERMOSTAT (LIGHT GREEN)
 - CO = CROSSOVER
 - MC = METER CENTER DROP
- = STANDARD LIGHT
 - = CAN LIGHT
 - = SMOKE DETECTOR
 - = 50 CFM FAN
 - = 100 CFM FAN

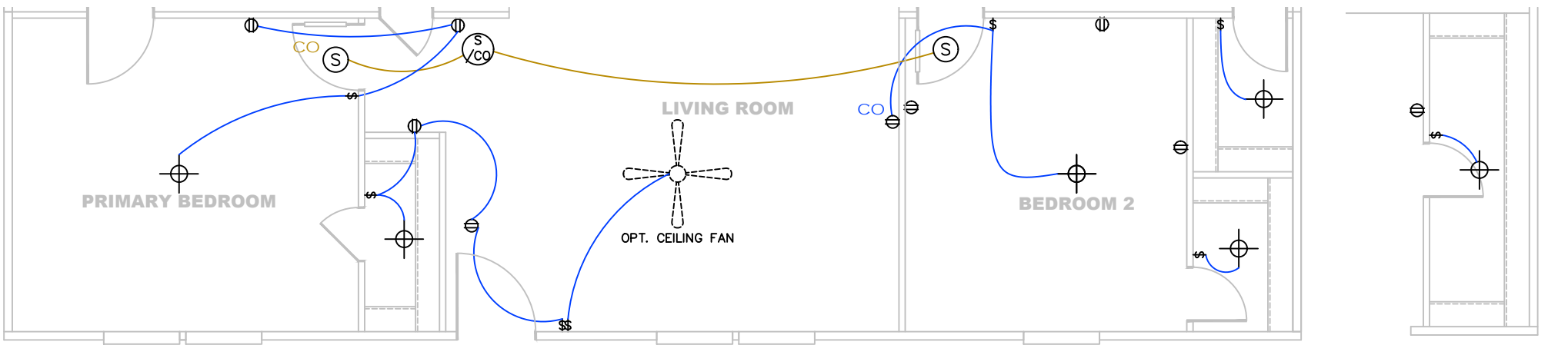


SHEET:	MASTER	WIRE RUN PLAN	Clayton - 934 1420 Mountain Rd. Andersonville, TN 37705 PH: 865.494.7800 FAX: 865.494.0243	HILBORN, WERNER, CARTER, AND ASSOCIATES, INC. 1627 SOUTH MYRTLE AVE. CLEARWATER, FL 33756	DRAWING #: 34M211 MODEL #: EAG28523A DATE: 07/10/2023	SCALE: N.T.S.	MODEL: EAGLE 52 (28'X52') SERIES: EAGLE SERIES PRODUCT DESIGNER: BRIAN K. RIFFEY	STD PLAN *CONDITIONED*: 1,369 FT ² REV. BY: REV. DATE:
--------	--------	---------------	--	--	---	---------------	--	---

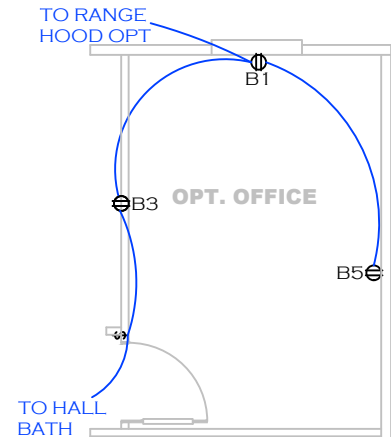
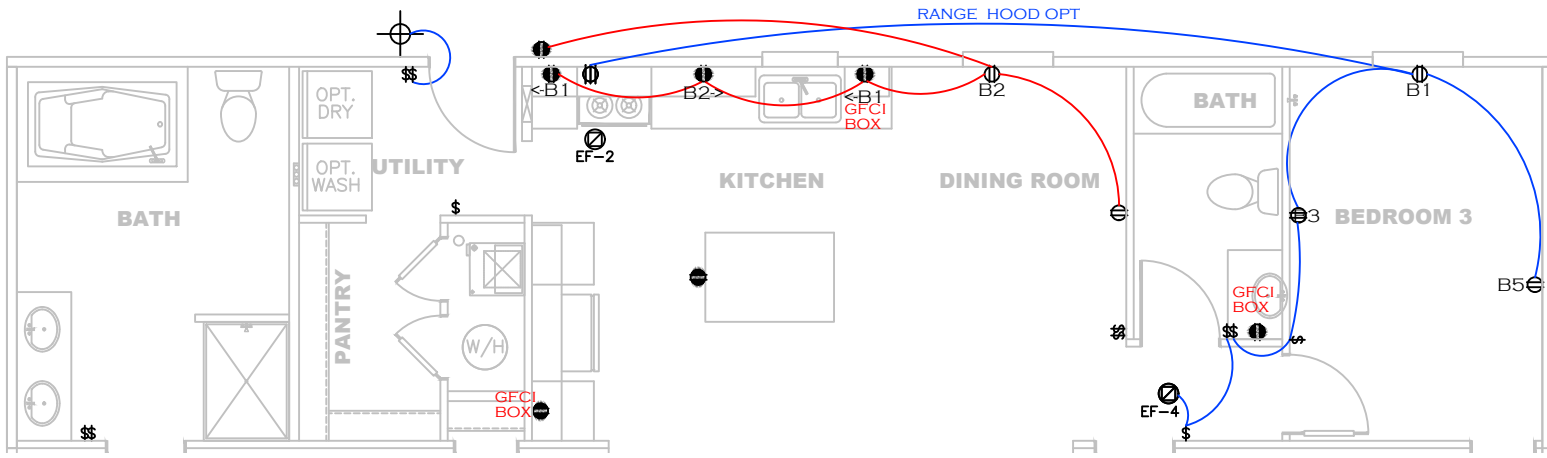


- = 14-2 WIRE (BLUE)
- = 14-2 WIRE (GREEN/LIGHTS)
- = 14-2 WIRE (ORANGE/LED)
- = 12-2 WIRE (RED)
- = 14-3 WIRE (BROWN)
- = THERMOSTAT (LIGHT GREEN)
- CO = CROSSOVER
- MC = METER CENTER DROP

- = STANDARD LIGHT
- = CAN LIGHT
- = SMOKE DETECTOR
- = 50 CFM FAN
- = 100 CFM FAN

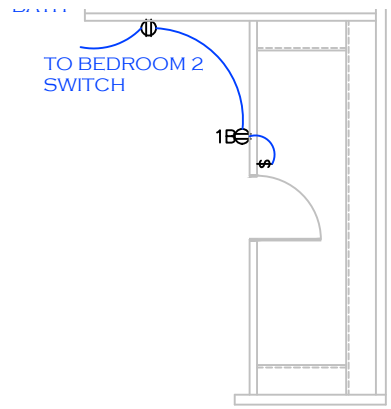
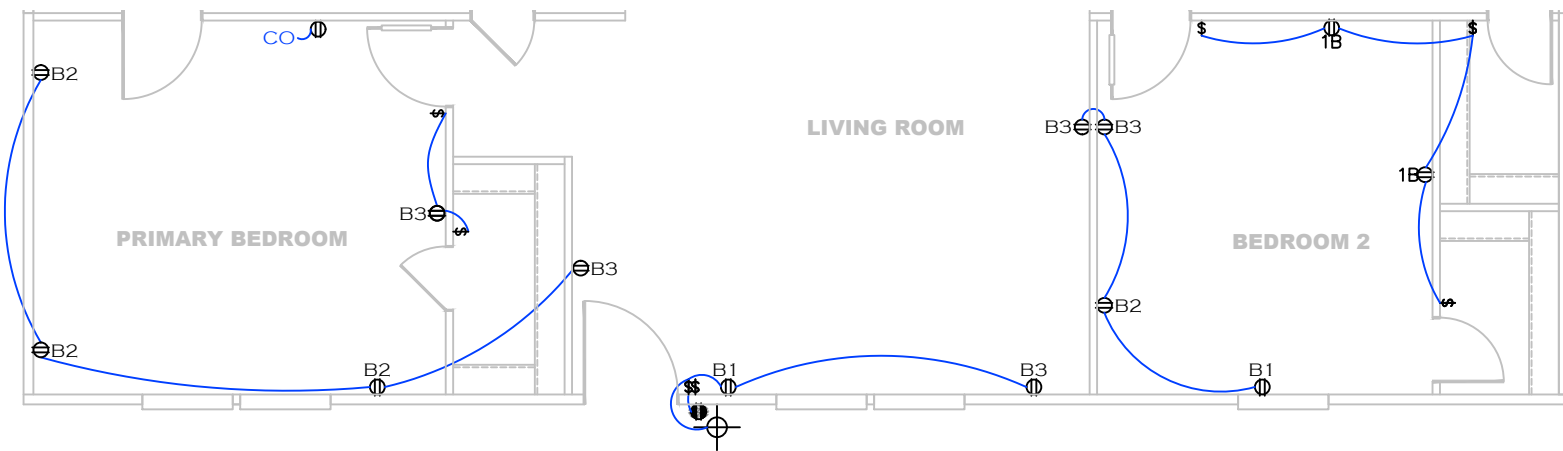


SHEET: TOP	WIRE RUN PLAN	Clayton - 934 1420 Mountain Rd. Andersonville, TN 37705 PH: 865.494.7800 FAX: 865.494.0243	HILBORN, WERNER, CARTER, AND ASSOCIATES, INC. 1627 SOUTH MYRTLE AVE. CLEARWATER, FL. 33756	DRAWING #: 34M159	MODEL: EAGLE 52 (28'X52')	STD PLAN *CONDITIONED*: 1,369 FT²
				MODEL #: EAG28523A	SERIES: EAGLE SERIES	REV. BY: DCS
				DATE: 11/03/2017	SCALE: N.T.S.	PRODUCT DESIGNER: DANIEL C. SHELDON
						REV. DATE: 04/01/19

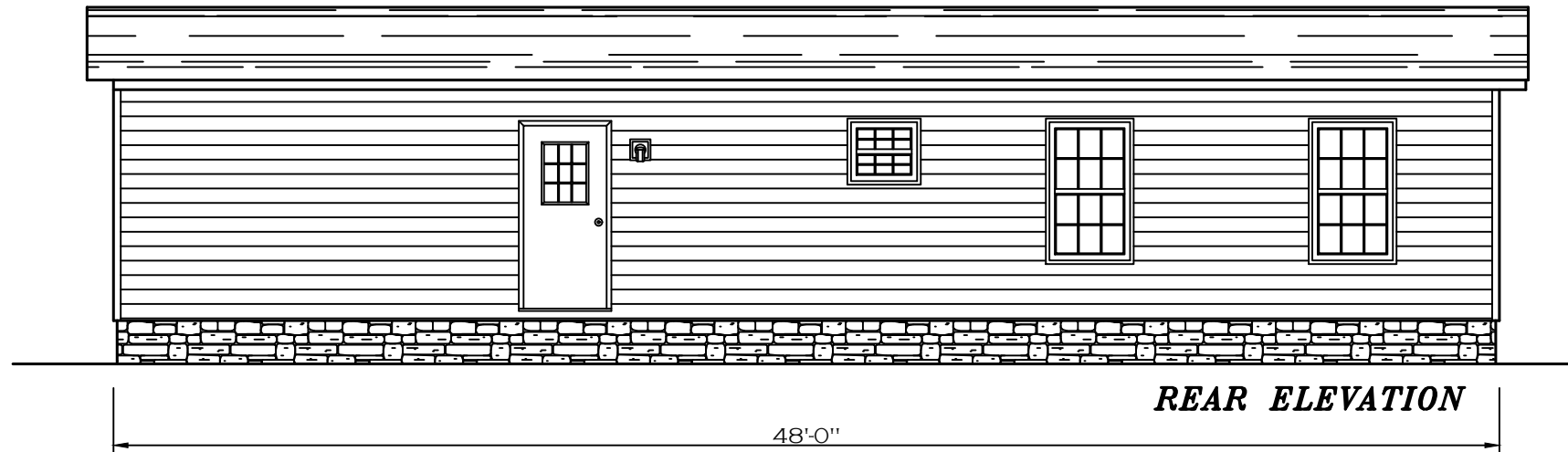


- = 14-2 WIRE (BLUE)
- = 14-2 WIRE (GREEN/LIGHTS)
- = 14-2 WIRE (ORANGE/LED)
- = 12-2 WIRE (RED)
- = 14-3 WIRE (BROWN)
- = THERMOSTAT (LIGHT GREEN)
- CO = CROSSOVER
- MC = METER CENTER DROP

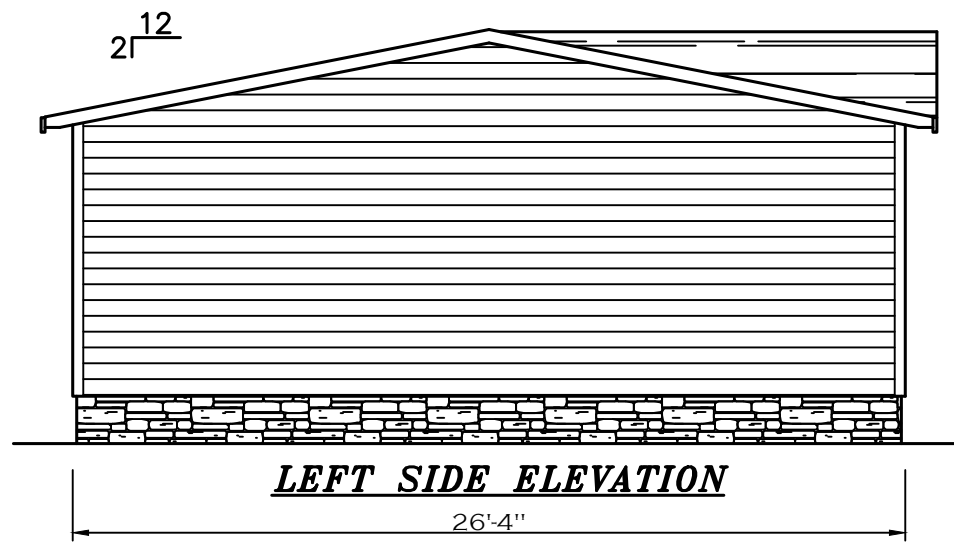
- = STANDARD LIGHT
- = CAN LIGHT
- = SMOKE DETECTOR
- = 50 CFM FAN
- = 100 CFM FAN



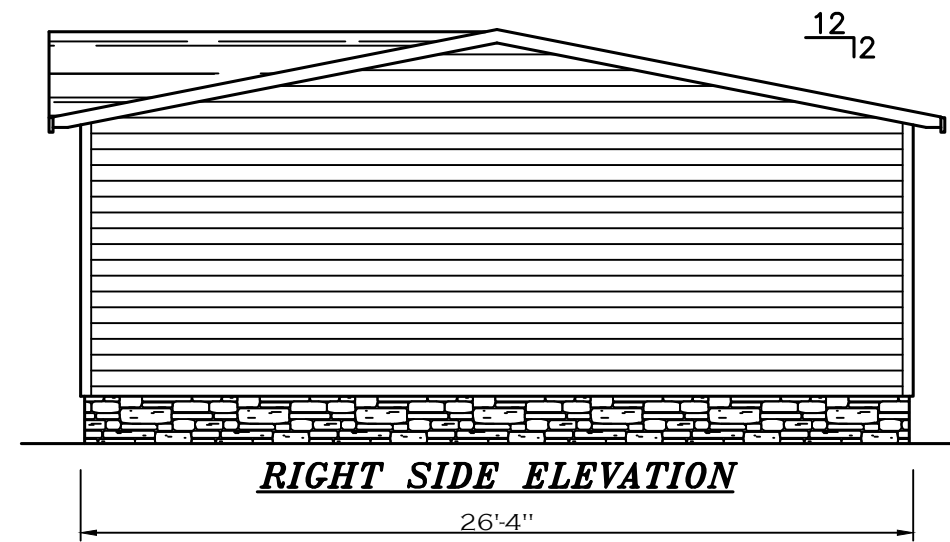
SHEET: BOTTOM	WIRE RUN PLAN	Clayton - 934 1420 Mountain Rd, Andersonville, TN 37705 PH: 865.494.7800 FAX: 865.494.0243	HILBORN, WERNER, CARTER, AND ASSOCIATES, INC. 1627 SOUTH MYRTLE AVE. CLEARWATER, FL 33756	DRAWING #: 34M211	MODEL: EAGLE 52 (28'X52')	STD PLAN *CONDITIONED*:
				MODEL #: EAG28523A	SERIES: EAGLE SERIES	1,369 FT ²
			DATE: 07/10/2023	SCALE: N.T.S.	PRODUCT DESIGNER: BRIAN K. RIFFEY	REV. DATE:



REAR ELEVATION




LEFT SIDE ELEVATION

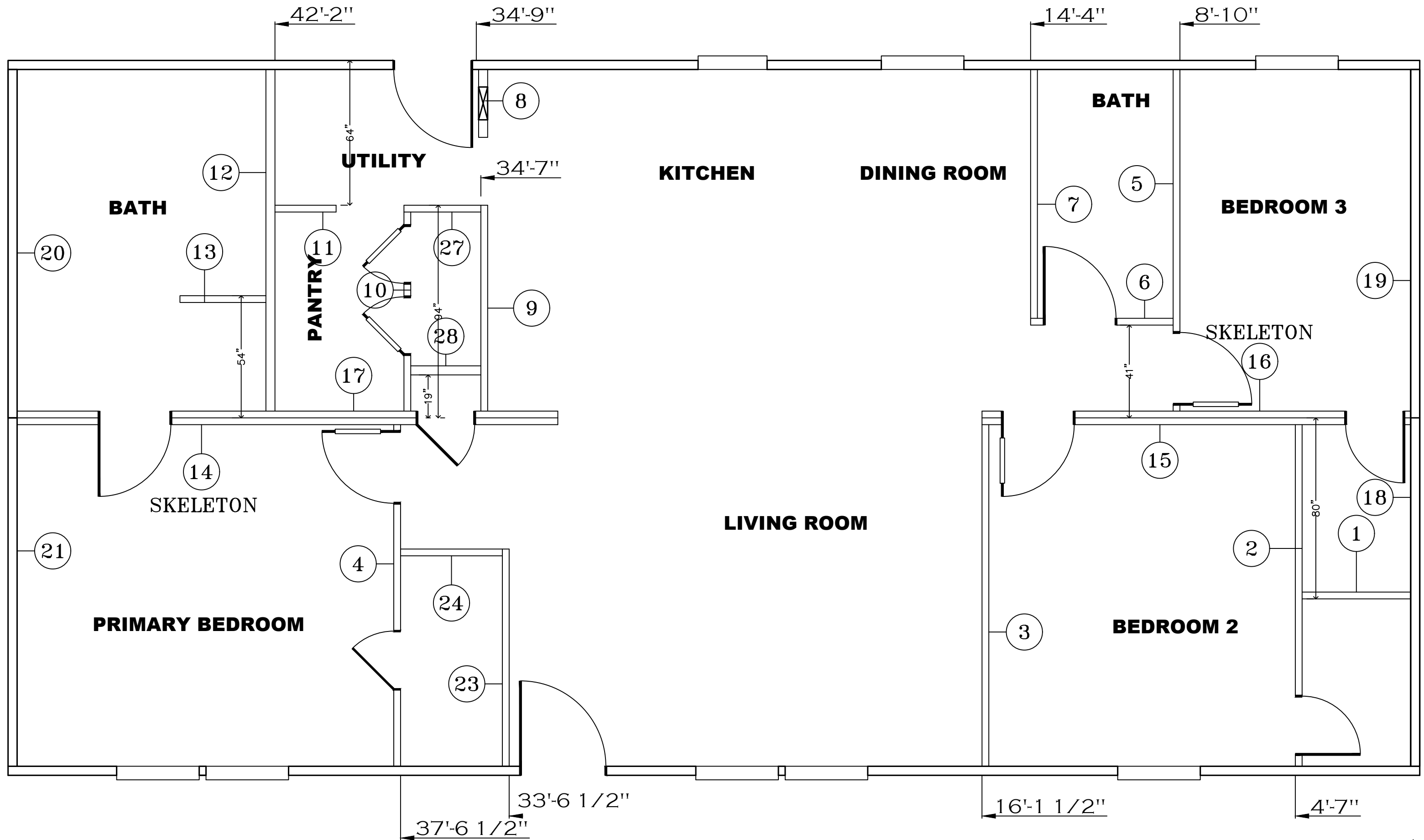


RIGHT SIDE ELEVATION



FRONT ELEVATION

SHEET: ELEVATION	EXTERIOR ELEVATIONS	 Clayton - 934 1420 Mountain Rd, Andersonville, TN 37705 PH: 865.494.7800 FAX: 865.494.0243	HILBORN, WERNER, CARTER, AND ASSOCIATES, INC. 1627 SOUTH MYRTLE AVE. CLEARWATER, FL. 33756	DRAWING # 34M210	MODEL: THE EAGLE 48 (28'X48')	STD PLAN "CONDITIONED": 1,264 FT ²
				MODEL # EGL28483A	SERIES: EAGLE SERIES	REV. BY:
				DATE: 07/26/2023	SCALE: N.T.S.	PRODUCT DESIGNER: BRIAN K. RIFFEY
						REV. DATE:



PRINT DATE: 10/09/2017

SHEET:

BASE

WALL SET

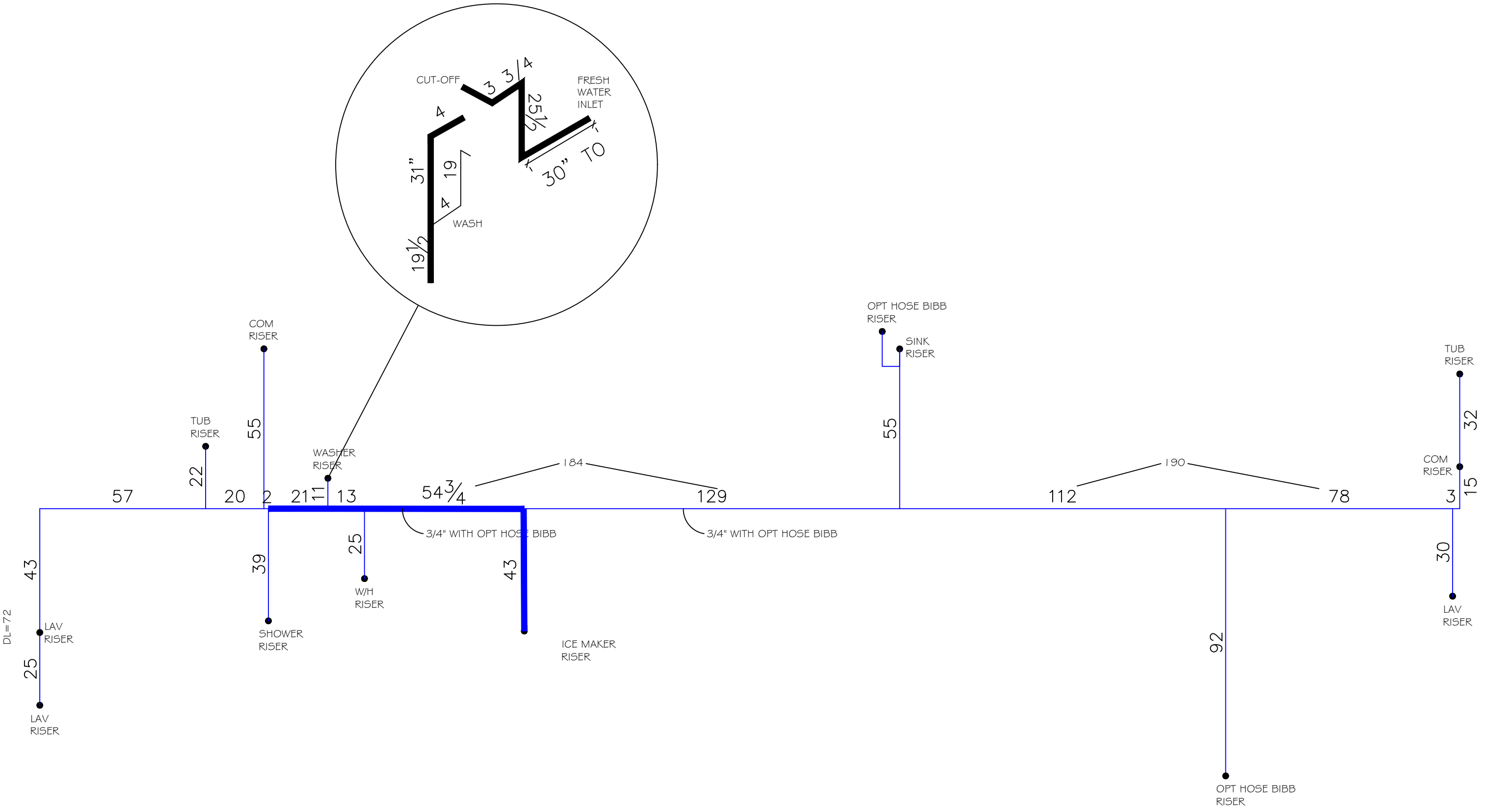
Clayton Clayton - 934
 1420 Mountain Rd, Andersonville, TN 37705
 PH: 865.494.7800 FAX: 865.494.0243

HILBORN, WERNER, CARTER,
 AND ASSOCIATES, INC.
 1627 SOUTH MYRTLE AVE.
 CLEARWATER, FL. 33756

DRAWING # 34M211
 MODEL # EGL28523A
 DATE: 6/30/23 SCALE: N.T.S.

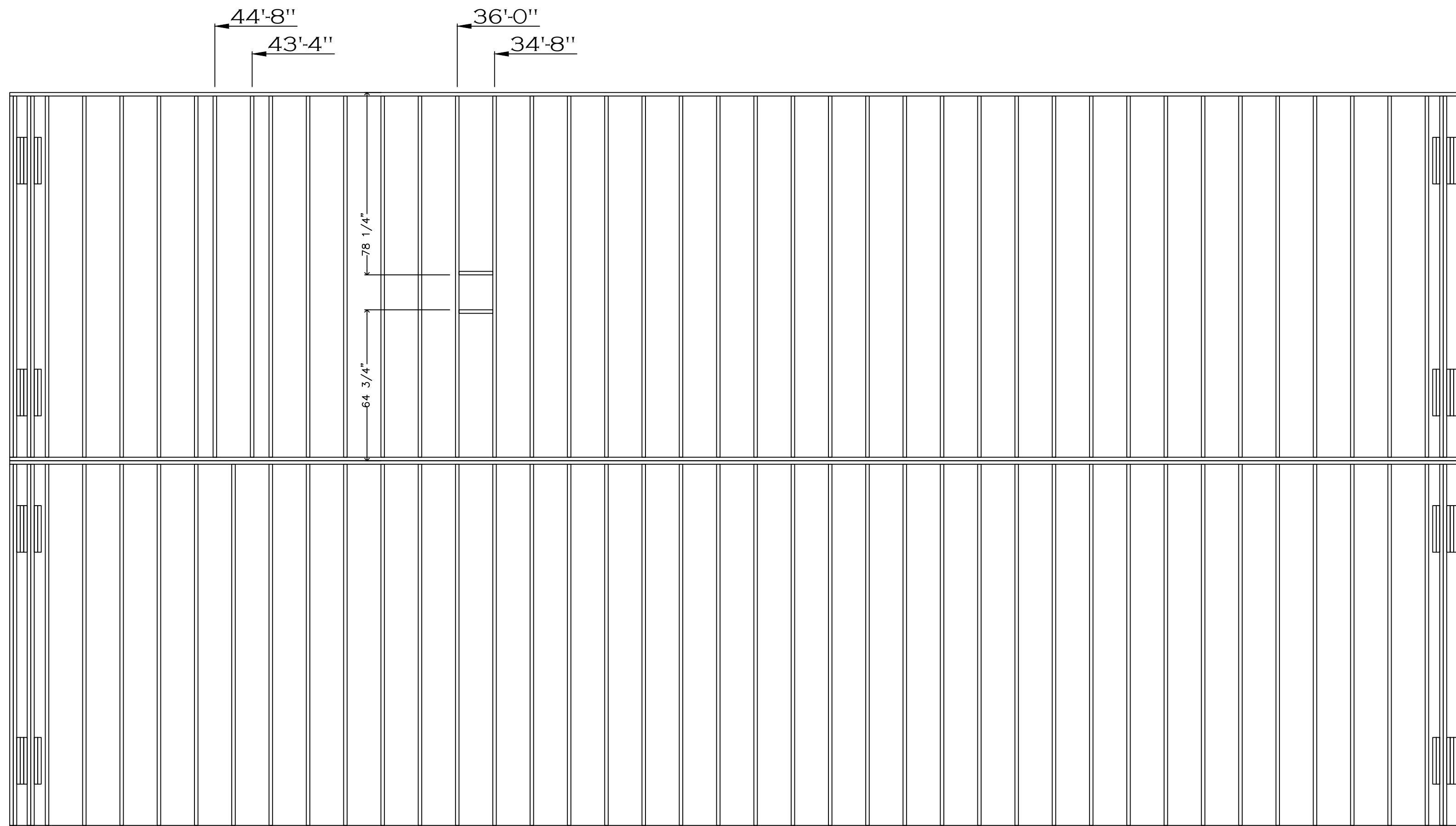
MODEL: EAGLE 52 (28'X52')
 SERIES: EAGLE SERIES
 PRODUCT DESIGNER: BRIAN K. RIFFEY

STD PLAN "CONDITIONED": 1,369 FT²
 REV. BY:
 REV. DATE:



PRINT DATE: 10/09/2017

SHEET: CW	2D COLD WATER SUPPLY LINES	Clayton - 934 1420 Mountain Rd, Andersonville, TN 37705 PH: 865.494.7800 FAX: 865.494.0243	DRAWING #:	34M211	MODEL:	EAGLE 52 (28'X52')	STD PLAN "CONDITIONED":	1,369 FT ²
			MODEL #:	MAV28523A	SERIES:	EAGLE SERIES	REV. BY:	
		DATE: 6/30/2023		SCALE: N.T.S.	PRODUCT DESIGNER:	BRIAN K. RIFFEY	REV. DATE:	



SHEET:
FJIG

FLOOR JOIST
LAYOUT



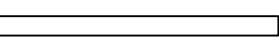
Clayton Clayton - 934
1420 Mountain Rd, Andersonville, TN 37705
PH: 865.494.7800 FAX: 865.494.0243

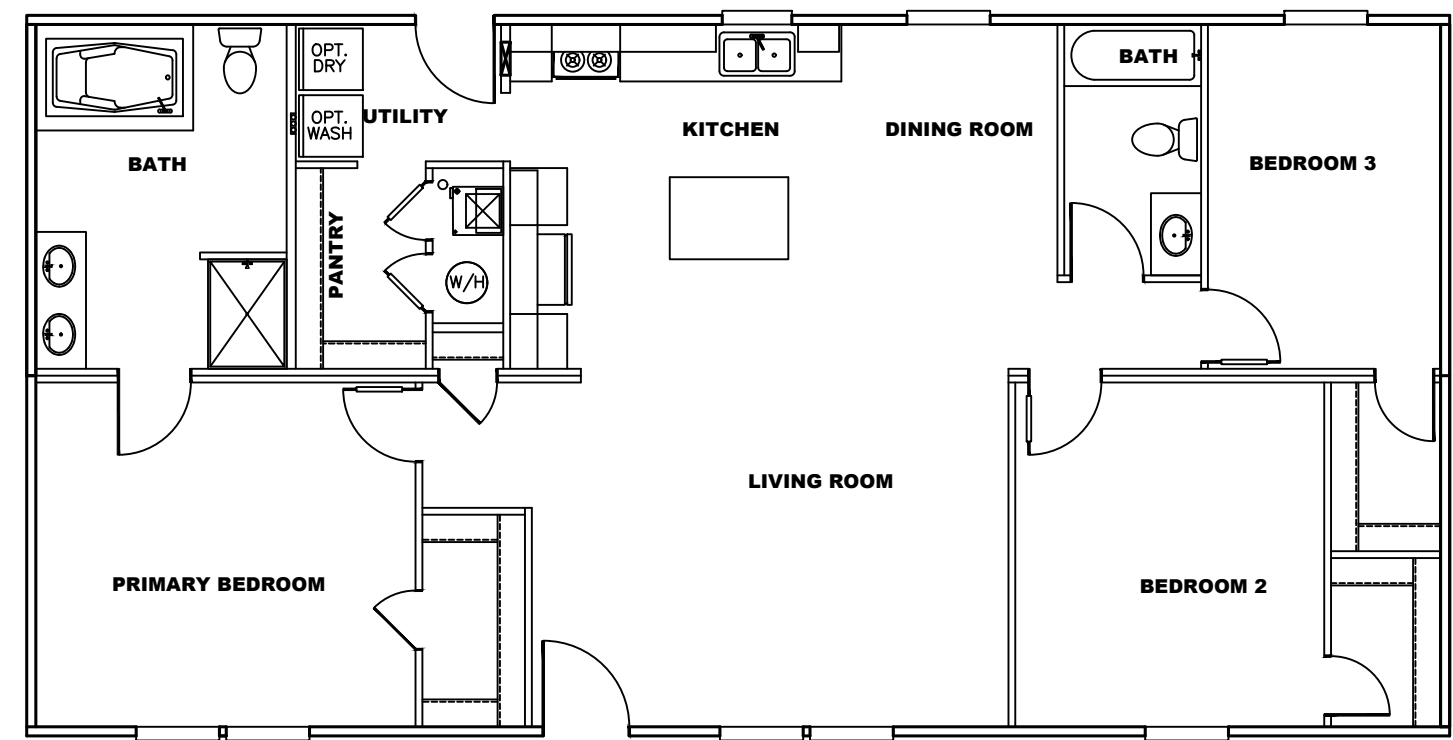
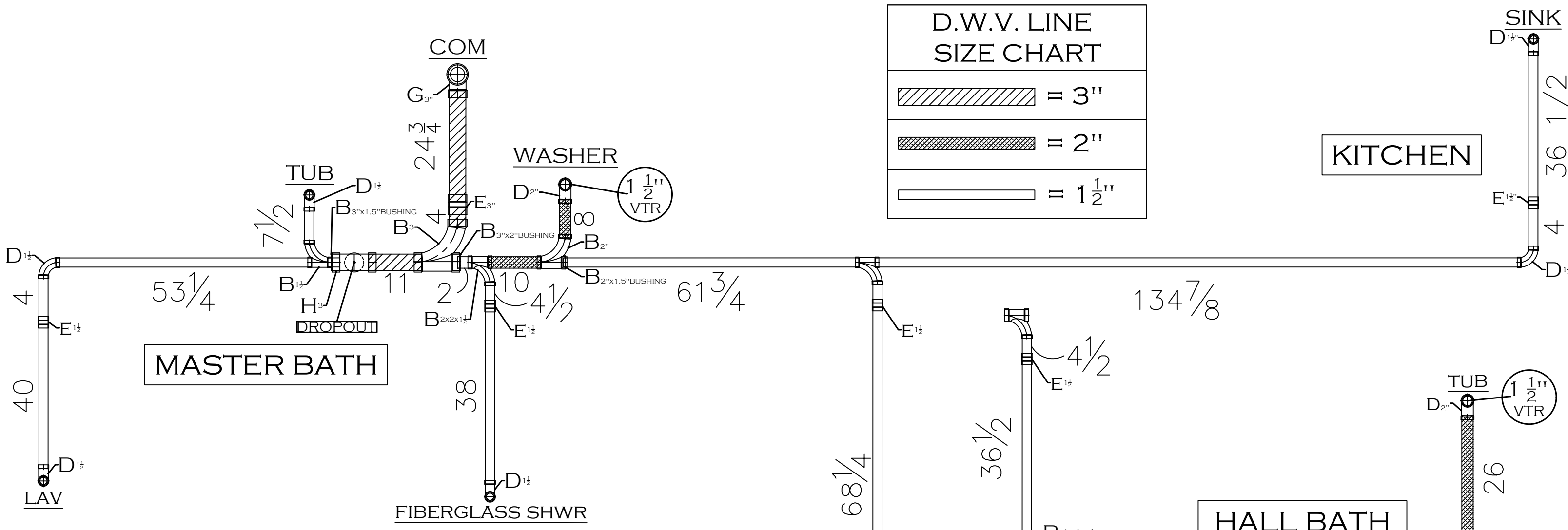
HILBORN, WERNER, CARTER,
AND ASSOCIATES, INC.
1627 SOUTH MYRTLE AVE.
CLEARWATER, FL. 33756

DRAWING # 34M211
MODEL # EGL28523A
DATE: 6/30/23 SCALE: N.T.S.

MODEL: EAGLE 52 (28'X52')
SERIES: EAGLE SERIES
PRODUCT DESIGNER: BRIAN K. RIFFEY

STD PLAN "CONDITIONED": 1,369 FT²
REV. BY:
REV. DATE:

D.W.V. LINE SIZE CHART	
	= 3"
	= 2"
	= 1 1/2"



REVISION	DATE	DESCRIPTION	REVISION	DATE	DESCRIPTION
1	4/14/21	UPDATED FIELD NOTES			
2	4/12/22	UPDATED FIELD NOTES			

SHEET: DRAIN 2D DRAIN LINES

Clayton Clayton - 934
1420 Mountain Rd, Andersonville, TN 37705
PH: 865.494.7800 FAX: 865.494.0243

HILBORN, WERNER, CARTER, AND ASSOCIATES, INC.
1627 SOUTH MYRTLE AVE.
CLEARWATER, FL. 33756

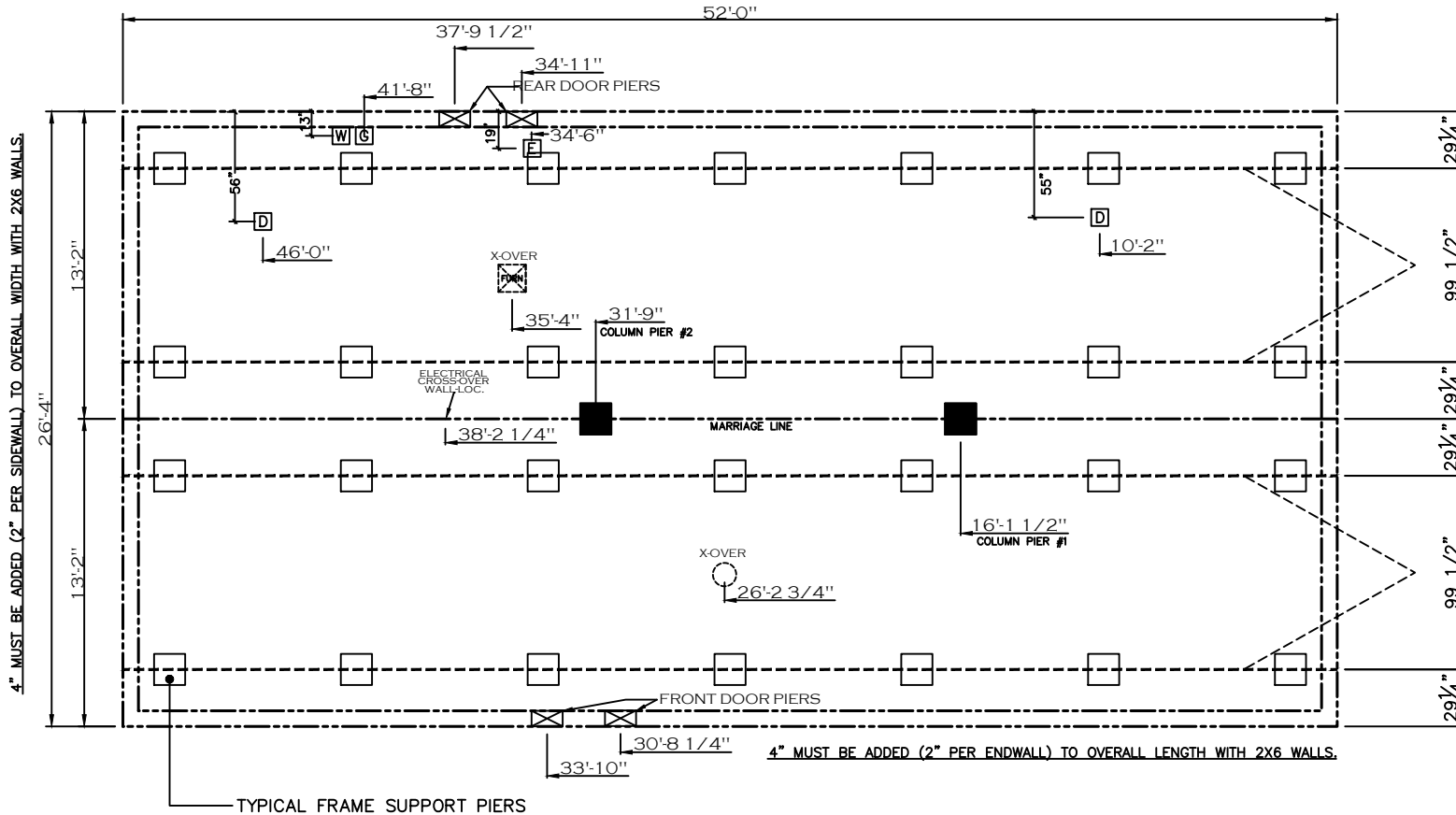
DRAWING #: 34M159
MODEL #: MAV28523A
DATE: 10/09/17 SCALE: N.T.S.

MODEL: EAGLE 52 (28'X52')
SERIES: EAGLE SERIES
PRODUCT DESIGNER: DANIEL SHELDON

STD PLAN "CONDITIONED": 1,369 FT²
REV. BY: BKR
REV. DATE: 04/12/2022

GENERAL NOTES:

- PIER LOADS SHOWN ARE TO BE USED TO SIZE THE FOOTINGS BELOW THE MARRIAGEWALL FOR COLUMN SUPPORT PIERS. REFER TO TABLES 6b AND 6c IN THE INSTALLATION MANUAL FOR LOAD ON FRAME PIER FOOTINGS FOR HOMES THAT DO NOT REQUIRE PERIMETER BLOCKING. REFER TO TABLES 7b AND 7c IN THE INSTALLATION MANUAL FOR LOAD ON FRAME PIER FOOTINGS THAT REQUIRE PERIMETER BLOCKING. REFER TO TABLES 10 AND 10a TO DETERMINE FOOTING SIZE FOR ALL PIERS.
- REFER TO TABLE 9 FOR PIER CONFIGURATION AND MAXIMUM ALLOWABLE HEIGHTS. CROSS REFERENCE THE PIER HEIGHT WITH THE MAXIMUM ALLOWABLE FLOOR HEIGHT LISTED IN THE FRAME TIEDOWN CHARTS (TABLE 18, 19, AND 20).
- FLOOR WIDTH SHOWN IS FOR STANDARD PRODUCT ONLY. CONTACT THE MFG PLANT FOR SPECIFICATIONS OF OPTIONS ORDERED.
- SERVICE DROP LOCATIONS IDENTIFIED ARE APPROXIMATE.
- THE MAXIMUM SPACING FOR FRAME SUPPORT PIERS FOR 8" I-BEAMS IS 8 FEET, 10" & 12" I-BEAMS ARE 10 FEET.



20 lb ROOF LOAD SIDEWALL OPENING PIER LOAD 28' BOX WIDTH	SIDEWALL OPENING (FT) REQUIRED PIER LOAD (LBS)					
	3	4	5	6	8	10
	1175	1330	1485	1640	1950	2260

*FOR 30 lb & 40 lb ROOF LOAD REFER TO TABLES 7b & 7c IN THE INSTALLATION MANUAL.

• PERIMETER SKIRTING MATERIAL AND FOUNDATION WALL DESIGNS ARE TO ALIGN WITH THE HOME'S EXTERIOR WALL PERIMETER.
• AREAS AROUND PORCHES OR RECESSED ENTRIES ARE TO BE SEPARATED TO PREVENT MOISTURE FROM ACCUMULATING BENEATH THE HOME.

PIER LOAD 20lb. ROOF LOAD	
COLUMN PIER #	COLUMN LOAD (LBS)
PIER #1	3,593
PIER #2	4,153

SERVICE DROP LEGEND	
[E]	= ELECTRICAL DROP
[W]	= WATER INLET
[D]	= DWV PLUMBING DROP
[G]	= GAS INLET

REV #	DATE	DESCRIPTION
1	02/01/22	UPDATED DROP DOWN LOCATIONS
2	07/05/22	ADDED MISSING PIERS

